

MAP FOR PUBLIC PROPERTIES ~ ART TOUR

www.annapolis.gov/PublicProperties



≈ PUBLIC PROPERTIES ≈ in the CITY

The following images display historic memorabilia, artifacts and curiosities in the City's Public Spaces.

STATE HOUSE GROUNDS



1 BELL OF THE *USS MARYLAND*

On June 2, 1961 Governor J. Millard Tawes dedicated the onboard bronze *Bell of the USS Maryland* to commemorate the Ship and the sailors that served on the *USS Maryland*. She was the third of four named USS ships after the State of Maryland, and was a Battleship launched on March 20, 1920. Known as the “Fighting Mary”, this ship was damaged numerous times and survived the attack on Pearl Harbor on December 7, 1941. This Flagship played a key role in the battles of the South Pacific at Midway, the Gilbert Islands, Leyte Gulf and Okinawa. “Fighting Mary” received 7 battle stars for her service during WWII. She was decommissioned in 1947 and is memorialized on the State House Grounds at State Circle.

2 *St. Mary's Cannon*

The *St. Mary's Cannon* was presented to the State in 1840 by the Reverend Joseph Carbery after its recovery from the *St. Mary's River*. The Cannon was brought to Maryland from England in 1634 by the first settlers and mounted on the walls of the fort at Maryland's first Capital, *St. Mary's City*. A tablet describing it was placed by the Daughters of the American Revolution, Peggy Stewart Tea Party Chapter of Annapolis on March 25, 1908.

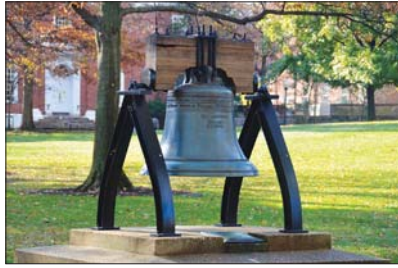


ST. JOHN'S COLLEGE CAMPUS

3 1812 Cannon

Although Annapolis was not engaged in battle related to the War of 1812, there are many artifacts and places of significance related to the war. *St. John's College Campus* features an *1812 Cannon*, confiscated from the defenders of the Annapolis harbor.





4 PHILADELPHIA LIBERTY BELL REPLICA

Along College Avenue is a replica of the [Philadelphia Liberty Bell](#), one of the 48 reproductions that were cast in copper by the U.S. Treasury Department in 1950 to promote the sale of defense bonds. Its inscription urges citizens to “dedicate ourselves, as our founding fathers did, to the principles of individual freedom for which our nation stands.” The replica sits on a base purchased

with the pennies contributed by children of Anne Arundel County.

5 PTOLEMY STONE

Also on Campus is a unique replica of the geocentric universe postulated by the Greek astronomer Claudius Ptolemy, the basis for navigation before the discoveries of Copernicus, Galileo and Newton. Today St. John’s math students use the [Ptolemy Stone](#) to retrace Ptolemy’s calculations of the apparent movement of the sun along the ecliptic.



GATEWAY TO ANNAPOLIS ALONG ROWE BOULEVARD



6 LATROBE COLUMNS

Eight marble columns, designed by [Benjamin Henry Latrobe](#) (1764-1820), front Rowe Boulevard outside the Robert Sweeney District Court. First installed in the Baltimore Exchange and Custom House in 1816, the columns were moved to the Court of Appeals building in 1901 when the Baltimore Exchange was demolished. When Maryland’s Court of Appeals suffered a similar fate in 1972, the salvaged columns were placed in storage. Deemed an important part of the state’s architectural heritage, they were restored and installed in 2000 on the present site.

AROUND TOWN



7 WEST STREET CHICKENS

The street from Westgate Circle to Calvert Street features a variety of [Chickens](#) designed by artists and children to publicize the City’s Art and Entertainment District.

8 THE GEESSE ARE HERE

At the foot of Charles Street, along Spa Creek, an artful display of [Copper Geese](#) adorns a city park. Once a parking lot, the park was completed in 2005 on the site of the old Annapolis Hospital.



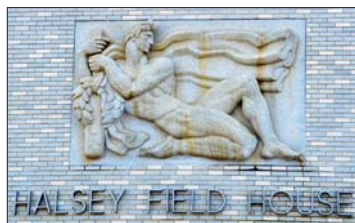


9 BOSTON SHOE REPAIR ADVERTISING SIGN

A hundred years ago buildings often served as advertising billboards. The City's only surviving example can be found at the foot of Green Street in a work that was restored in 2012 by David Stern and his son, Joseph Stern, of Stern Shoe Repair in Landover, MD. Stern Shoe Repair is currently in its third generation of business starting in 1945.

10 COMMODORE JOHN BARRY PLAQUE

Born in Wexford, Ireland, sister city to Annapolis, Barry was an officer in the Continental Navy during the Revolutionary War and later in the U.S. Navy. He was appointed a Captain in the Continental Navy by George Washington on December 7, 1775 and was the first Captain placed in command of a U.S. warship. He shares the moniker of "Father of the American Navy" with Scotsman John Paul Jones. A plaque honoring him was unveiled by the Mayor of Wexford at the Prince Georges Street End Park in 2008. In 2013 the USNA dedicated the new visitor entrance along Prince George Street to Commodore John Barry.



11 THE ATHLETE

The Halsey Fieldhouse and Visitors Center bears a work of art sculpted in granite by *Donald DeLue* (1897-1988). The artwork depicts Hercules, warrior and athlete, the battle club symbolizing his valor as a warrior and a laurel wreath symbolizing his supremacy as an athlete. Both are allegorical messages offering challenges to the midshipmen of the USNA to athletic excellence.

12 TRASH BIRD

To bring attention to their campaign against trash, Annapolis Green commissioned the work of artist Jim Swain from South Carolina in 2018. The open wire replicas can capture trash picked up by passers by. This heron is at the Visitor's Center on West Street. Another sculpture of a crab can be seen at the Annapolis Maritime Museum in Eastport.



13 PEAR

Artist *Jan Kirsh* specializes in fruit and vegetable sculpture. This Pear, created in 2017, is joined with Asparagus and an Eggplant to enhance the garden at Evelyn's Restaurant on Annapolis Street in West Annapolis.





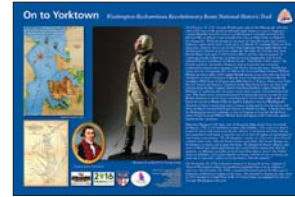
14 GREENSCAPE

For over 25 years on the third Saturday in April neighborhood volunteers have been planting trees and flowers and beautifying public areas in the city. The Daffodils you see in the Spring and our 42% tree canopy is a result of this Greenscape program. Turner Park in Eastport is an example of the work and commitment of

volunteers to improve their neighborhood. The Park is now surrounded by planters designed by *Mike Mattingly* and initiated by *John “Bumper” Moyer*.

15 ON TO YORKTOWN SIGNAGE

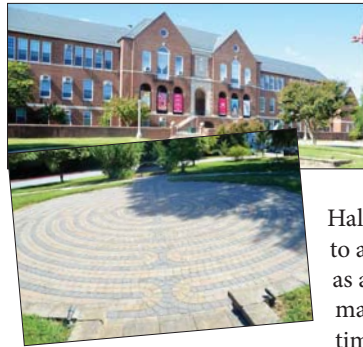
Annapolis was a center for moving the Revolutionary Army to meet the English General Cornwallis in Yorktown, Virginia. Three signs mark locations in the City where troops were camped. Approximately 4,000 French troops marched from Newport, RI to Annapolis near St. John’s College before moving on along the [National Washington/Rochambeau Historic Trail](#) established by Congress. This sign sponsored by [Annapolis Art in Public Places](#) and the City of Annapolis is placed at the foot of the Spa Creek Bridge in Eastport where Marquis de Lafayette camped with his American Troops.



16 ART WALK – CROSS SECTION OF WEST STREET ACROSS FROM PARK PLACE

This artful crosswalk is designed by *Sally Wern Comport*, *Lindsay Bolin* and the students of Studio 39. Sponsored and/or funded by Homestead Gardens, the Anne Arundel Cultural Arts Commission and private sponsors in cooperation with the City Department of Public Works, this crosswalk is the first of several planned along West Street in 2018.

MARYLAND HALL FOR THE CREATIVE ARTS



17 LABYRINTH & FLOWERS

The labyrinth mosaic and path featured here was created in the 1990s as a tribute to the Founders of Maryland Hall. Labyrinths date back to ancient times first seen as a symbolic trap for

malevolent spirits as the Minotaur in Greek mythology. Over time, for those who walked the labyrinth, they emerged in the modern world as a fine art symbol of pilgrimage and search for meaning.

On the walls of Maryland Hall in the distance are flower images of photos taken by Photographer *Marion Warren*, selected by curator Joan Surrette and framed into weatherproof outside art by *Sally Wern Comport*. The flowers represent photography not generally associated with the late award-winning Warren who is best known for his portraits of community life in Maryland.



Magnolia, 1975 (left) • White Lotus, 1973 (right)

18 WEIRD AND WONDERFUL MURAL PROJECT

Future History Now, under the direction of *Jeff Huntington* and in collaboration with Maryland Hall for the Creative Arts at 801 Chase Street, designed ten murals depicting various species of flora and fauna to replace the old boarded-up



Enlargement



windows in 2018. *FHN*, *Laura Brino* and *BWSA* united forty kids and ten teaching artists to execute the work. The overarching concept is to allow kids to embrace the idea of “weird” as a potentially wonderful notion – to embrace the beauty in all things.

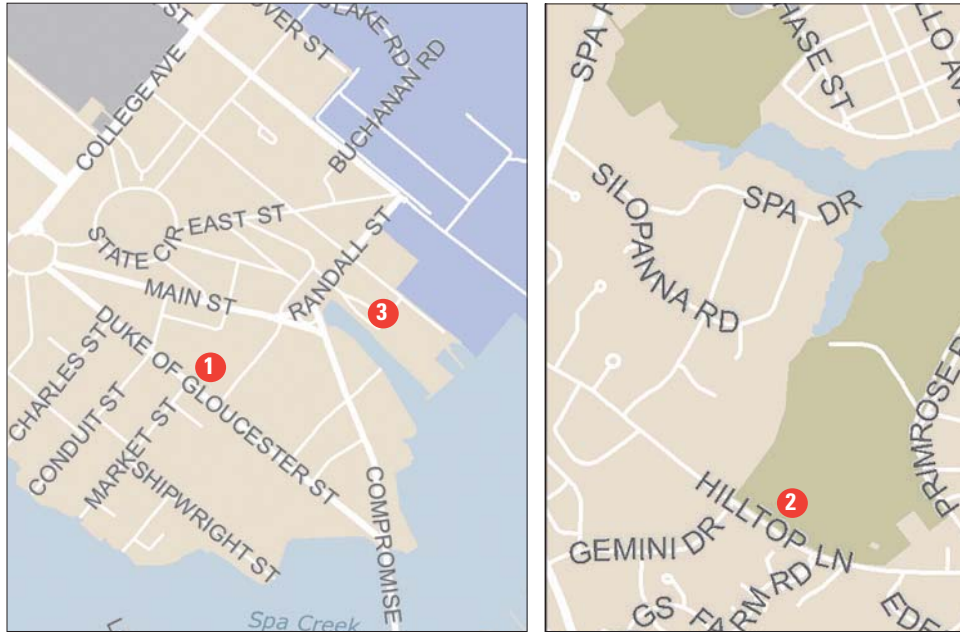
Collaborators in this project are: Jóvenes Artistas, Black Wall Street Annapolis (BWSA), Centro De Ayuda, Bates Middle and Annapolis High School’s Performing & Visual Arts Magnet Programs, and Street Art Films. This project was funded by FHN and MHCA.

19 LEISURE TIME BANNERS

Artist *Sally Wern Comport* designed these banners for the entrance to the “Pip” Moyer Recreation Center on Hilltop Lane. Featured are the leisure time and recreation activities sponsored by the *Annapolis Department of Recreation and Parks*. Installed January 2018.



≈ ANNAPOLIS CITY PUBLIC ART GALLERIES ≈



In 1999 *Ellen Moyer*, Alderman from Eastport, a champion of the arts, introduced legislation creating the *Art in Public Places Commission* with the intent of enhancing the beauty of the City by engaging artists in creating public murals and sculptures. When she became the first woman Mayor of Annapolis in its 300 Year history, she opened the first Annapolis City Art Gallery in City Hall in early 2002.

Today in City Hall (#1), where it is reputed George Washington once danced, you will find rotating exhibits of contemporary professional artists as well as the work of budding young artists living in the city's diverse communities.

Not wanting to confine art displays to one building alone, the City now supports a second gallery at the Pip Moyer Recreation Center on Hilltop Lane (#2), and a mini gallery at the Harbormaster's Office at City Dock (#3).



“Darin”

“Charles (The Desperate Man,
after Courbet)”

“HaHa”

All: Oil on Wood by Jeff Huntington

The artists appearing on these pages have been featured in a series of solo exhibits sponsored by *The Art In Public Places Commission of the City of Annapolis, Arlene Kaye Berlin*, Exhibit Coordinator. Exhibit locations include City Hall, 160 Duke of Gloucester Street, the Pip Moyer Recreation Center, 273 Hilltop Lane, and the Harbormaster's office at City Dock.



Richard Niewerth
"Milano Train Station"



Sunhee Kim Jung,
"Jack's Playground"



Tony Jerome Spencer
"Warrior's Offering"



Allison Zaucha
"Workshop at Newtowne 20"
Photo



Christine Graefe Drewyer
"Snow Snooze" 18x24
Original Oil painting



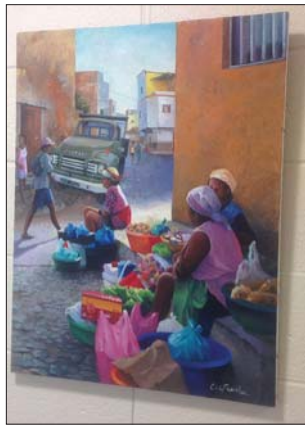
Carolyn Council
"Rounding the Mark"



Barbara Nuss
"Autumn Morning"
Oil on Linen



Ric Conn
"Yellow Jacket"



Cindy Fletcher Holden
"Mindelo"
Oil on Canvas



Julia Gibb
"Benediction"
Photo



Ed Ahlstrom
"Bloomsbury Square"
Oil on Panel



Patrice Drago
"City Center 2"
Acrylic on Canvas